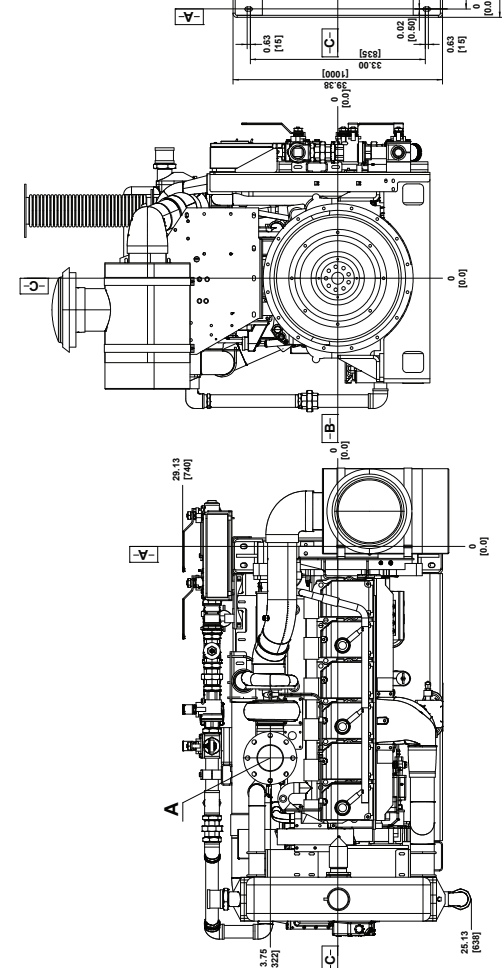


**LEFT SIDE VIEW**

**FRONT VIEW**



**TOP VIEW**

**REAR VIEW**

**RIGHT SIDE VIEW**

**DATUMS:**

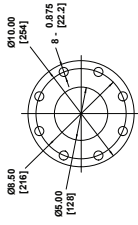
- A-- DIMENSIONAL FACE OF FLYWHEEL
- B-- ENGINE HORIZONTAL CENTER (CRANKSHAFT)
- C-- ENGINE VERTICAL CENTER (CRANKSHAFT)

**NOTES:**

1. FUEL SUPPLY PIPING MINIMUM INSIDE DIAMETER FROM TANK TO ENGINE MUST BE  $\geq 0.500$  [12].
2. FUEL RETURN PIPING MINIMUM INSIDE DIAMETER FROM TANK TO ENGINE MUST BE  $\geq 0.500$  [12].

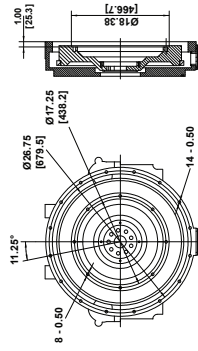
**DRAWING SUBJECT TO CHANGE WITHOUT NOTICE.**

**A - EXHAUST FLANGE (5°)**



**SCALE 2:1**

**FLYWHEEL HOUSING SAE #0 FLYWHEEL 14.00**



- NOTES:**
1. ALL PLUMBING MUST BE SUPPORTED AND/OR ISOLATED SO THAT NO WEIGHT OR STRESS IS APPLIED TO ANY ENGINE COMPONENT.
  2. REFER TO SPECIFIC MODELS' INSTALLATION, OPERATION & MAINTENANCE MANUAL FOR INSTALLATION GUIDELINES.


**INSTALLATION DRAWING**  
DIESEL FIRE PUMP DRIVER  
MODEL AFB-159

**DRW BY:** MJF  
**DATE:** 01/16/2021

**CHK BY:** MJF  
**DATE:** 01/16/2021

**APPROVED:** [Signature]  
**DATE:** 01/16/2021

**PART NO.:** AF6-159-00

**MATERIAL:**

**PROJECTION:**

**SCALE:** NONE

**PAGE:** 1

**OF:** 1

**REV:**

**UNITS:** [IN/MM]